



# Bureau Veritas

*Move Forward with Confidence*



# Who are Bureau Veritas?



## KEY FACTS & FIGURES

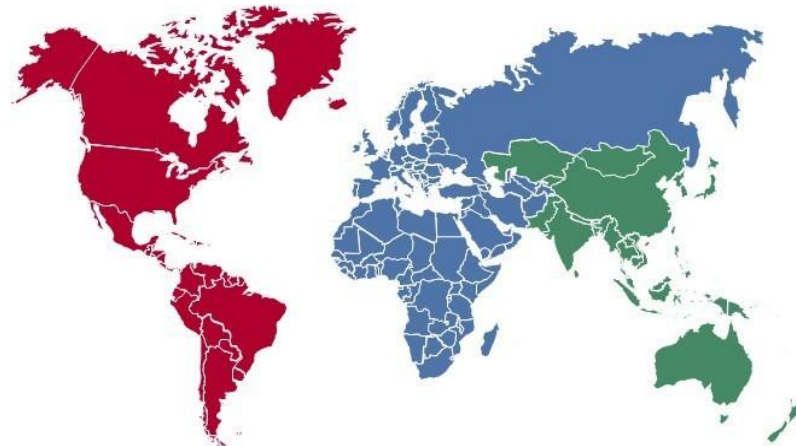
- 2015 revenue:  
**€4.6 billion**
- **66,500** employees
- **1,400** offices and laboratories, in **140** countries
- **400,000** clients
- **8** global businesses with leadership positions
- Bureau Veritas is listed on the Euronext Paris stock exchange (Stock symbol: BVI).

Created in 1828, Bureau Veritas is a **global leader in Testing, Inspection and Certification (TIC)**, delivering high quality services to help clients meet the growing challenges of quality, safety, environmental protection and social responsibility.

As a trusted partner, Bureau Veritas offers innovative solutions that go beyond simple **compliance with regulations and standards**, reducing risk, improving performance and promoting sustainable development.

Bureau Veritas core values include **integrity** and **ethics, impartial counsel** and validation, **customer focus** and **safety at work**.

Bureau Veritas is recognised and accredited by major national and international organisations.



# A large portfolio of businesses

## 2015 Revenue: €4.6 billion

8%



**Marine  
& Offshore**

17%



**Commodities**

14%



**Consumer  
Products**

6%



**Government  
Services &  
International  
Trade**

23%



**Industry**

13%



**In-Service  
Inspection &  
Verification**

11%



**Construction**

8%



**Certification**

The World's Leading Group in providing conformity assessment and certification services with extensive network of 930 locations across 140 countries



## Americas

- 200 locations, including 100 laboratories
- 10,800 staff
- 30 countries



## EMEA

- 520 locations, including 120 laboratories
- 20,500 staff
- 88 countries



## Asia-Pacific

- 210 locations, including 110 laboratories
- 16,700 staff
- 22 countries

## The Group

### Consumer Products Services

### Certification

### Marine

### Industry

### In-Service Inspection & Verification

### Construction

### Government Services & International Trade

### Commodities



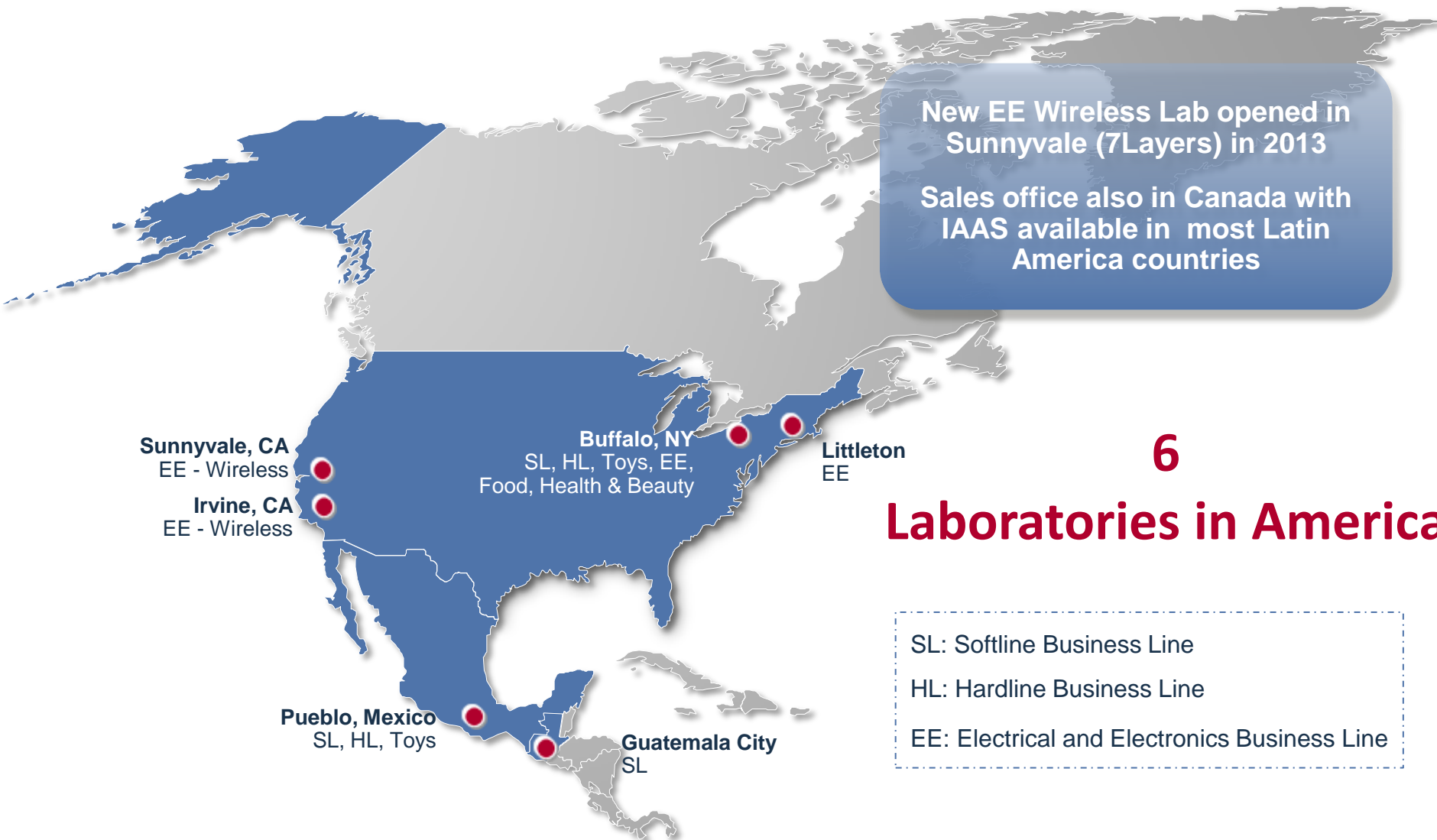
# Consumer Products Services (CPS) – Life Cycle Support



**Added Value • Faster to Market • Optimum Profits**

- **23** of the Top 25 Best Global Brands\*\*
- **22** of the Top 25 Global Retailers\*
- **22** of the Top 25 Retailers in North America\*

**\*\* Source: Interbrand 2013 Top 100 Best Global Brands (#s consists only of those brands relative to the retail industry)**



Alexandria, Egypt  
SL

Jeddah, Saudi Arabia  
SL

IAAS offices in Mauritius and Morocco

## 2 Laboratories in Middle East and Africa

# Bureau Veritas Consumer Products Services – China

27 labs shown

SL lab in Quanzhou opening in Q3

HL lab in Zibo opening in Q3

New auto lab in SH opened in 2014

Additional IAA/Sales office locations in Banqiao (Taiwan), Chengdu, Cixi (with subcon E&E lab), Foshan, Fuzhou, Guangzhou, Hangzhou, Hong Kong, Ningbo, Shanghai, Shantou, Shenzhen, Tianjin, Wenzhou, Xiamen, Yiwu and Yongkang

## 27 Laboratories in China



## 9 Laboratories in South Asia



Lab opened in Noida in 2013  
with scope to expand  
capacity and capability  
(Food, EE)

IAAS offices also in Philippines,  
Thailand and Vietnam (Hanoi)

## 5 Laboratories in East Asia



Sales office also in Japan (Tokyo)  
with IAAS offices in Japan  
(Yokohama) and Korea (Seoul -  
Kangnam-Ku)

Seoul (4 labs), South Korea  
SL, HL, EE - Wireless



Yokohama (2 labs), Japan  
EE – Wireless, Food

Osaka, Japan  
SL

**7 Laboratories  
in North-East Asia**

## 16 Laboratories in Europe



# Worldwide Update: BV One Source (BVOS)



**OneSource Suite modules support you in optimizing your supply chain and making informed and timely decisions:**

**OTRD:** Order Tracking, Reporting & Dispositioning

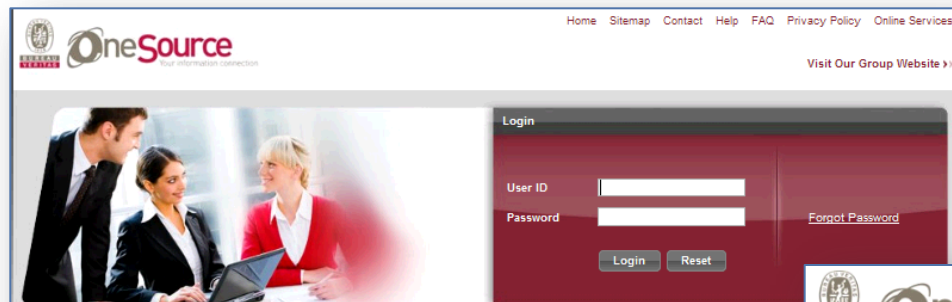
**RSM:** Regulatory & Standards Management

**PTF:** Product Technical Folder

**eCOM:** eCommerce Online TRFs

**The original, the best and the most comprehensive online supply chain quality management platform for the retail / consumer goods industry**

## One Source for Supply Chain Information



**BVOneSource Features**

- Data mining and business intelligence function allows you to identify supply chain performance issues so you can improve QA/QC sourcing spend and focus.
- Features a dashboard, designed for easy access to reports and important information all in one place.
- Provides secure web access to real-time data at anytime from anywhere.
- Track and monitor order status at any of our worldwide locations.
- Customised reporting tailored to your individual needs.
- Access a dedicated Knowledge Centre for obtaining the latest regulatory updates.
- Analyze vendor/factory performance.

**Bureau Veritas Overview**

Bureau Veritas is a world leading provider of conformity assessment solutions to the consumer product services market.

We work with you, wherever you are within the consumer product supply chain, to identify, manage and mitigate quality, safety, environmental and social risks.

**Quick Service Links:**

- Overview
- Product Testing
- Inspections
- Factory Assessment
- Social Compliance
- Corporate Sustainability Training

**Announcements**

**New Version of BV OneSource**

The BV OneSource update is now live. Please refresh your browser before you login. On first login, your password will be reset and you will be prompted to create a new password. You will receive an email with these new credentials. Also note that as of this date, the BV OneSource system will be updated to the latest version.

© Bureau Veritas 2010

alan.kirwilliam@uk.bureauveritas.com [Client] [My Links](#) | [Help](#) | [Logout](#)

**OneSource**  
Your information connection

[Home](#) | [Order Tracking](#) | [Product Disposition](#) | [Knowledge Center](#) | [Reports](#) | [Quick Links](#) |

Welcome, 2157467\_alan.kirwilliam@uk.bureauveritas.com  
Welcome to BV OneSource

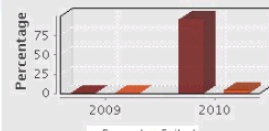
**Status Of Orders** [Saved Queries](#)

**All** | Testing | Inspection | FA | SA

- Open Orders (736)
  - Testing (19)
  - Inspection (600)
  - FA (88)
  - SA (19)
- On Hold Orders (2)
- Closed Testing Orders (0)
- Closed Inspection Orders (1662)
- Closed FA Orders (44)
- Closed SA Orders (13)

**Overall Performance** [View BI](#)

Percentage



■ Passed ■ Failed

**News** [View News](#)

- 08/Sep/2010 - Bureau Veritas Laboratory to Become "Greener"
- 03/Sep/2010 - Bureau Veritas Launches Mill Improvement Program ..
- 02/Sep/2010 - Click to View all BV News

**Messages** [Inbox\(0 Items, 0 Unread\)](#)

No messages to display

**Bulletins** [View All](#)

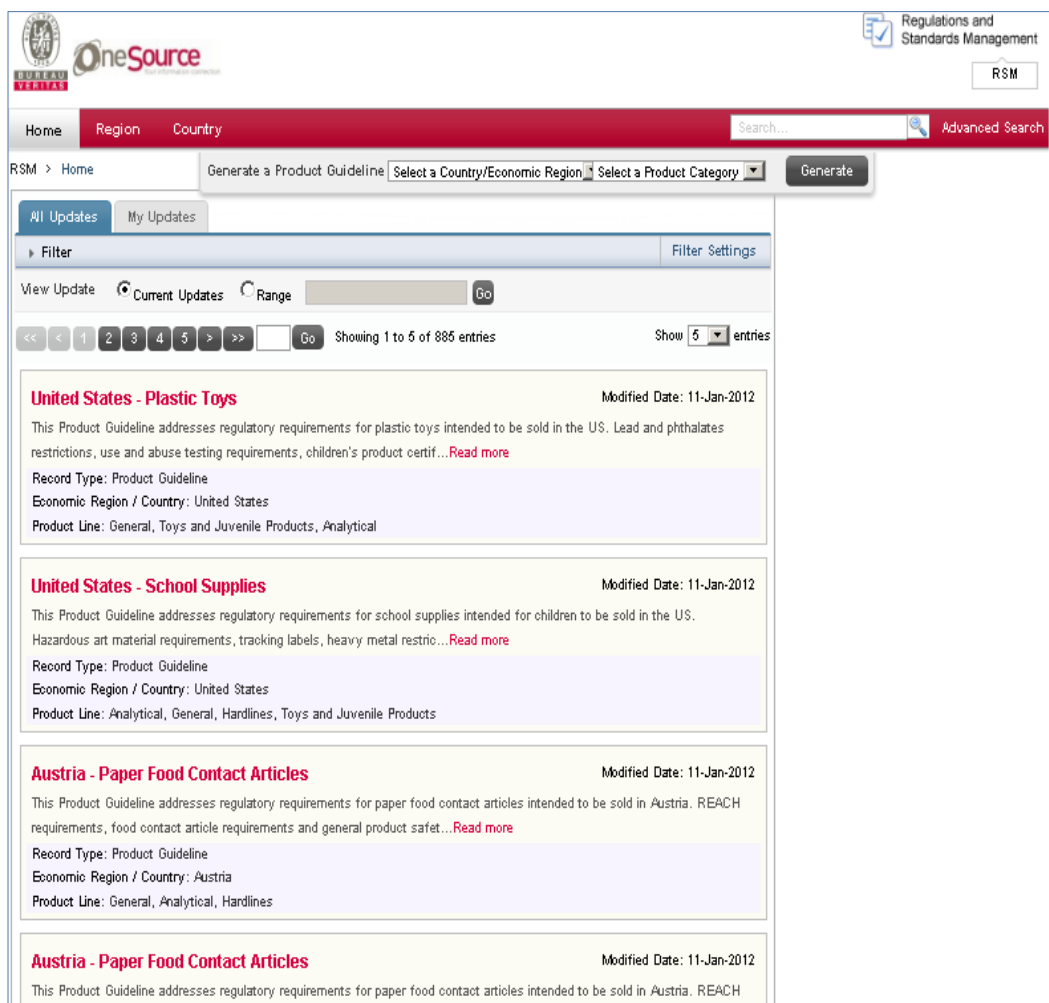
- Germany Proposed Restriction of Polycyclic Aromatic...
- NEWSBYTE: California Releases Proposal for Final G...
- Revision of Phthalate Requirements in Toys Under J...

**Solution Spotlight** [View All](#)

- EU Toy Safety Directive - Bureau Veritas Solution
- Regulatory Manual for the US Market: US Compliance...

## RSM Features and Functions:

- Instant Access to Product Requirements by Region, Country or Product
- Subscribe only to the Products and Countries you Need
- Real Time Maintenance of Information
- Quick and Advanced Searching Options



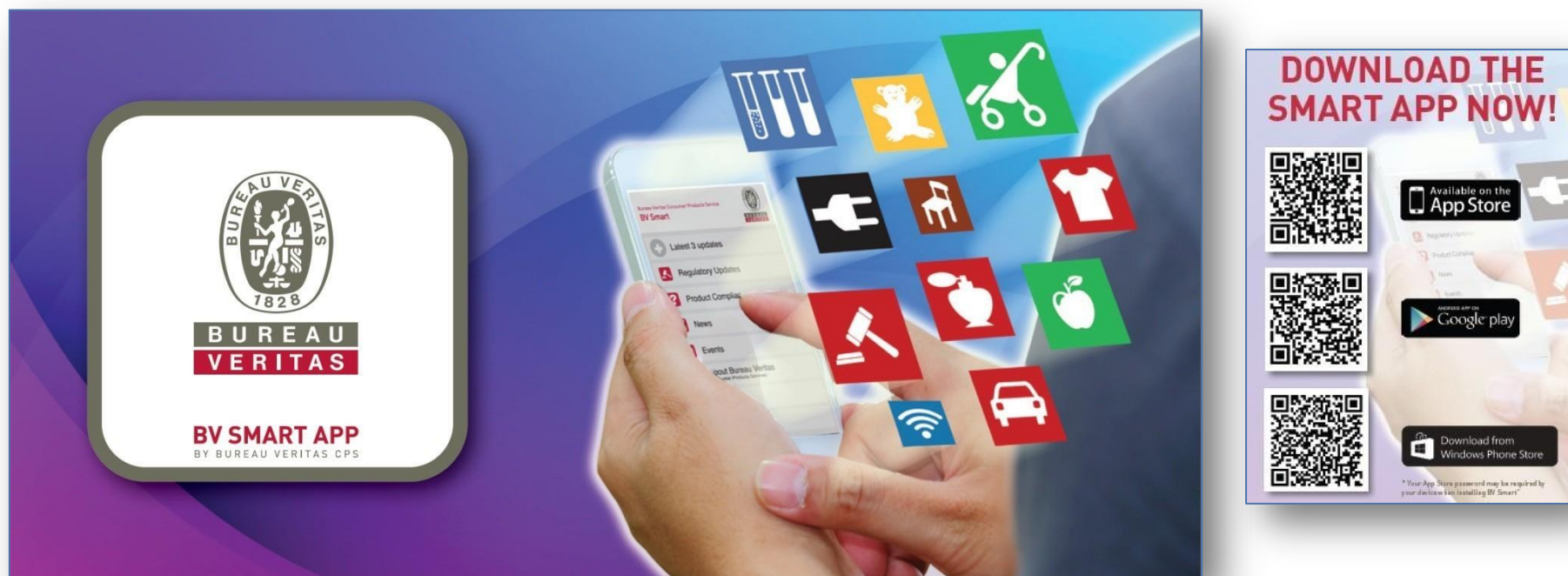
The screenshot displays the RSM OneSource web application. The header includes the Bureau Veritas logo, the 'OneSource' brand name, and navigation links for 'Home', 'Region', and 'Country'. A search bar is located on the right. Below the header, a navigation bar shows 'RSM > Home' and options to 'Generate a Product Guideline', 'Select a Country/Economic Region', and 'Select a Product Category'. A 'Filter' section is visible, with tabs for 'All Updates' and 'My Updates'. The main content area lists product guidelines, including 'United States - Plastic Toys', 'United States - School Supplies', 'Austria - Paper Food Contact Articles', and 'Austria - Paper Food Contact Articles'. Each entry includes a description, a 'Read more' link, and metadata such as 'Record Type', 'Economic Region / Country', and 'Product Line'.

# BV Smart: the Bureau Veritas App

The new **mobile App** from Bureau Veritas Consumer Products Services developed to let You Stay up-to-date with the latest regulatory and legislative changes impacting the consumer products supply chain.

To download BV Smart for free:

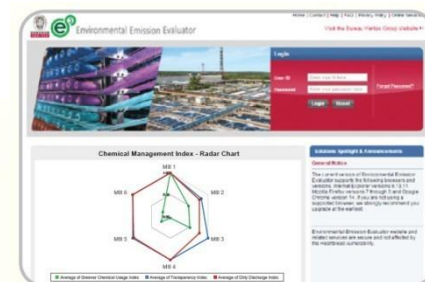
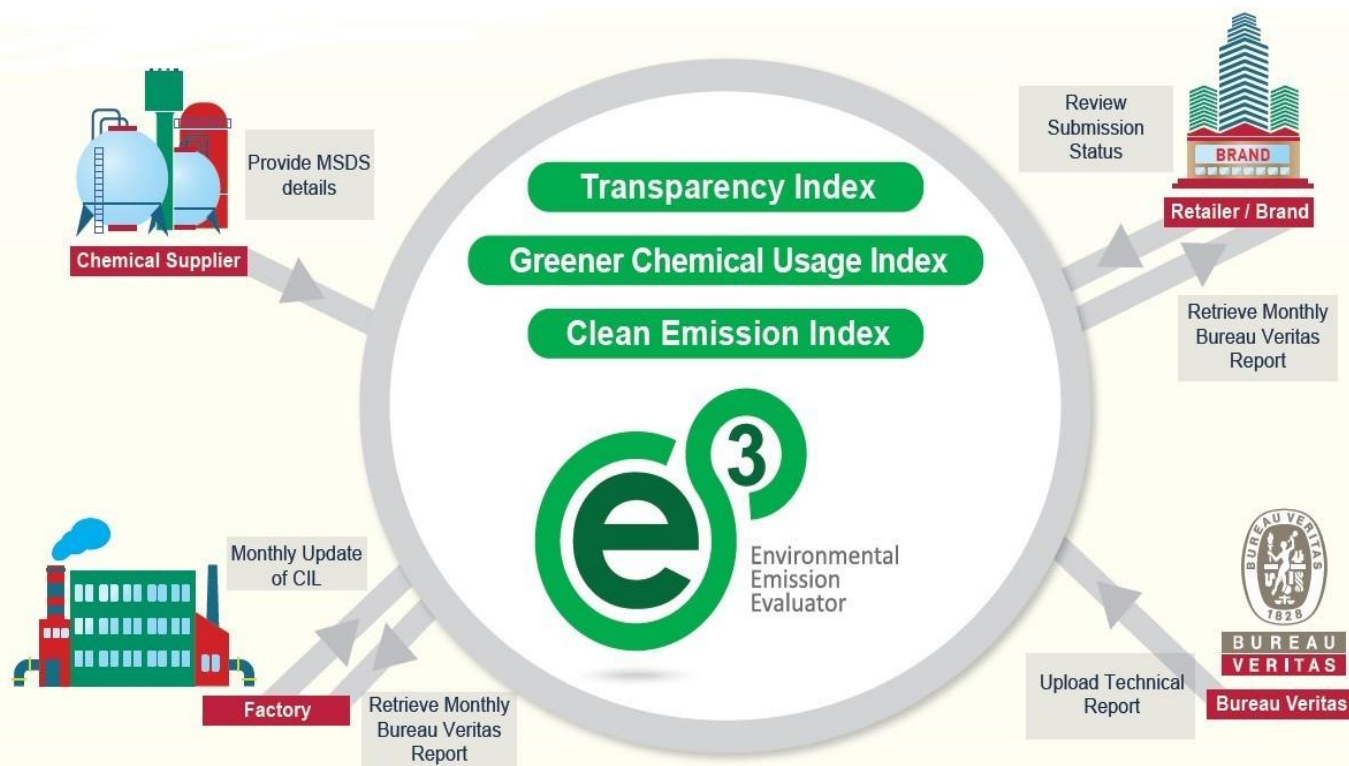
- iTunes: <https://itunes.apple.com/us/app/bv-smart/id980300644?ls=1&mt=8>
- Google Play: [https://play.google.com/store/apps/details?id=com.BVUK.bvcps&hl=en\\_GB](https://play.google.com/store/apps/details?id=com.BVUK.bvcps&hl=en_GB)
- Microsoft Store: <https://www.windowsphone.com/en-gb/store/app/bv-smart/fcd3a5f3-35ef-4164-a808-86d2b2465a26>



# New Exclusive Tool: Environmental Emission Evaluator (BVE3)

*PRO-ACTIVE • UNIQUE • CONTINUOUS IMPROVEMENT*

International brands and retailers, under continuous watch of governmental and non-governmental organizations, need to work with supply chain partners to reduce such environmental impacts, sustain controls over the use of toxic chemicals and proactively eliminate these chemicals from the supply chain.



## TECHNICAL REVIEW

"BVE<sup>3</sup> is the only commercial model available that can systematically estimate the discharge scenarios of multiple pollutants for the textile processing industry."

"...created based on the most up to date and authoritative emission scenario document in the industry, together with the team's highly valuable expertise in the corresponding industrial processes."

"In addition to its good algorithm and module design, the BVE<sup>3</sup> generates effective estimations for discharge scenarios and possesses a range of additional features to accommodate flexible input types, select the appropriate calculation parameters and screen / track major hazardous chemicals in the system."

"...BVE<sup>3</sup> provides a very economical way to estimate the discharge scenarios in the textile processing industry."



## Bureau Veritas Certest CPS Italy

*Move Forward with Confidence*



*Providing expert quality assurance services to the Fashion & Luxury worlds*

- **Address**

Via Risorgimento, 16 - Ponte a Egola

56024 SAN MINIATO (PI) Italy

Phone: 0039 (0)571 49626

E-Mail: [cpsinfo@certest.bureauveritas.com](mailto:cpsinfo@certest.bureauveritas.com)

web site: [www.bureauveritas.com/cps](http://www.bureauveritas.com/cps)

[www.certest.it](http://www.certest.it); <http://certest-elimis.it>

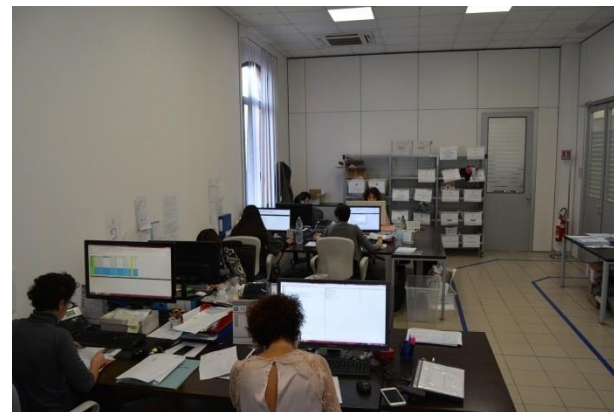
- **Opening Hours**

Monday-Friday

08:00-13:00 / 14:00-18:30



With a surface of about 1500 square meters, Bureau Veritas Certest CPS employs about 40 people including highly specialized technicians.



*Providing expert quality assurance services to the Fashion & Luxury worlds*

Thanks to a constant update on technical and normative evolutions, tests can be performed in conformity with different Official Methods (UNI, EN, ISO, GB, GB/T, QB/T, CPSC, BS, JIS, DIN, etc.).

### Product Areas

- Apparel
- Accessories (Handbags, SLG, Belts...)
- Footwear
- Jewellery

And all related **raw materials**:






- Leather
- Textile
- Hardware
- Components
- Trims

### Test lead times

Indicatively, Standard lead time for tests and report is 5 working days.

*As additional service especially thought to answer to specific customers needs, quicker procedures are foreseen:*

- “Urgent 3 days”
- “Express 1 day”

APPAREL	ACCESSORIES (Handbags, SLG, Belts)	FOOTWEAR	JEWELLERY	RAW MATERIALS
				

# Bureau Veritas Certest CPS Italy

## Full Capability List



MAE/002/PROG\_LIN\_04\_10/02/2018

### ELENCO PROVE / LIST of TESTS 2017

INDICE INDEX	
1. Prove per il settore CALZATURE, PELLETTERIA, ABBIGLIAMENTO, GIOIELLERIA sulla matrice CUIORI/ PELLAMI 1. Tests for FOOTWEAR, LEATHERGOODS, APPAREL, JEWELLERY AREA on LEATHER	1.1 Prove FISICO-MECCANICHE 1.1 PHYSICAL-MECHANICAL tests 1.2 Prove di SOLIDITA' del COLORE 1.2 COLOUR FASTNESS tests 1.3 Prove CHIMICHE ed ECO-TOSSICOLOGICHE 1.3 CHEMICAL and ECOTOXICOLOGICAL tests
2. Prove per il settore CALZATURE, PELLETTERIA, ABBIGLIAMENTO, GIOIELLERIA sulla matrice TESSILI / TESSILI RICOPERTI 2. Tests for FOOTWEAR, LEATHERGOODS, APPAREL, JEWELLERY AREA on TEXTILE / COATED TEXTILE	2.1 Prove FISICO-MECCANICHE 2.1 PHYSICAL-MECHANICAL tests 2.2 Prove di SOLIDITA' del COLORE 2.2 COLOUR FASTNESS tests 2.3 Prove CHIMICHE ed ECO-TOSSICOLOGICHE 2.3 CHEMICAL and ECOTOXICOLOGICAL tests
3. Prove su PRODOTTO FINITO: CALZATURE E COMPONENTI 3. Tests for FINISHED PRODUCT: FOOTWEAR and COMPONENTS	3.1 CALZATURA COMPLETA 3.1 FOOTWEAR (FINISHED PRODUCT) 3.2 COMPONENTI (TOMIAIO, FODERA, SOTTOPIEDE e SOTTOPIEDE DI PULDIA) 3.2 COMPONENTS (UPPER, LINING, SOLE and INSOLE) 3.3 COMPONENTI (SUOLA, TACCHI, SOPRATACCHI, LACCI, CERNIERE, ACCESSORI) 3.3 COMPONENTS (SOLES, HEELS, TOP PIECES, LACES, ZIPS, ACCESSORIES)
4. Prove su PRODOTTO FINITO: PELLETTERIA (BORSE, PORTAFOGLI, CINTURE, CINTURINI DA OROLOGIO, VALIGIE, ...) 4. Tests for FINISHED PRODUCT: LEATHERGOODS (BAGS, WALLETTS, BELTS, STRAPS TO WATCH CASES, ...)	
5. Prove su ACCESSORI 5. Tests on ACCESSORIES	5.1 Prove di CORROSIONE, INVECCHIAMENTO 5.1 CORROSION, AGEING tests 5.2 Prove FISICO-MECCANICHE 5.2 PHYSICAL-MECHANICAL tests 5.3 Prove di SOLIDITA' del COLORE 5.3 COLOUR FASTNESS tests 5.4 Prove di USURA 5.4 WEAR tests 5.5 Prove CHIMICHE ed ECO-TOSSICOLOGICHE 5.5 CHEMICAL and ECOTOXICOLOGICAL tests
6. Prove secondo metodi ASTM 6. Tests as per ASTM test methods	
7. PROVE per il MERCATO CINESE-conformità agli STANDARD GB, ESEGUITE IN BV CERTEST 7. TESTS for CHINESE MARKET-conformity to GB STANDARDS, PERFORMED IN BV CERTEST	
8. PROVE per il MERCATO CINESE - conformità agli STANDARD GB, ESEGUITE IN CINA 8. TESTS for CHINESE MARKET - conformity to GB STANDARDS, PERFORMED IN CHINA	
Le prove indicate con il nome vengono presso laboratori esterni qualificati (in funzione della disponibilità del laboratorio qualificato in outsourcing) e non sono accreditate. The tests indicated with the name are performed in external laboratories qualified (according to the availability of qualified laboratory outsourcing) and are not accredited. Le prove non accreditate sono indicate con * Not accredited test methods are indicated with * Richieste di prove non comprese nel presente documento saranno comunque accettate ed eseguite, se praticabili. Requests of tests not listed in this document will still be considered and processed if practicable. Le tariffe sono da concordare con IVA ESCLUSA. All prices are not include VAT	

BUREAU VERITAS CERTEST S.r.l.  
Via Borgognoni, 10, 48018 San Martino (PC) - Italy - Tel.: +39 0571 80601, Fax: +39 0571 80602  
E-mail: [certest@bureauveritas.com](mailto:certest@bureauveritas.com), Web: [www.bureauveritas.com/Italy](http://www.bureauveritas.com/Italy), Web Portal: <http://certest.bvitalia.it/>



148 N. 1450

1 di 80

Il Direttore Generale



*Providing expert quality assurance services to the Fashion & Luxury worlds  
a continuous effort to improve our service*

**New capabilities, developed in the last few months in various areas:**

- **Softline Testing**– Fiber Analysis, Colourfastness, Shrinkage, Physical tests.
- **Safety Testing** – Flammability of Clothing Textiles, Use and Abuse Tests, Slide Fasteners,...
- **Analytical Testing** – Inorganic and Organic tests.



# Bureau Veritas Certest CPS Italy

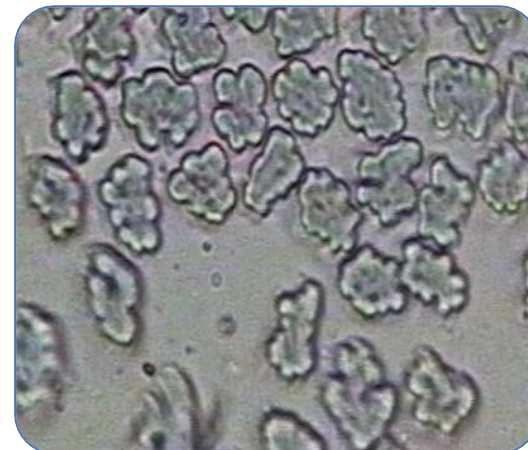
## Capability Overview, Softline Testing

*Providing expert quality assurance services to the Fashion & Luxury worlds  
a continuous effort to improve our service*

### FIBER ANALYSIS

TEST	METHOD
Fiber composition	EN ISO 1833#
Fiber Analysis: Qualitative	AATCC 20#

### Full Capability List



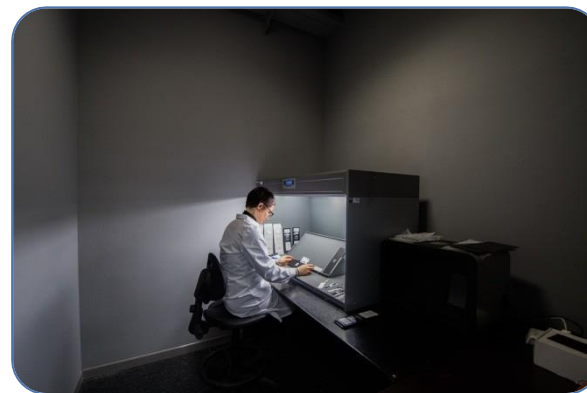
# Bureau Veritas Certest CPS Italy

## Capability Overview, Softline Testing

*Providing expert quality assurance services to the Fashion & Luxury worlds  
a continuous effort to improve our service*

### COLOURFASTNESS TEST (partial list)

TEST	METHOD
Colour fastness to artificial light	UNI EN ISO 105-B02
Colour fastness to cycles of to-and-fro rubbing	UNI EN ISO 11640
Colour fastness to cycles of to-and-fro rubbing	UNI EN ISO 105-X12
Colour fastness to perspiration	UNI EN ISO 11641
Colour fastness to perspiration	UNI EN ISO 105-E04
Colour fastness to water	UNI EN ISO 11642
Colour fastness to water	UNI EN ISO 105-E01
Colour fastness of small samples to solvents	UNI EN ISO 11643
Colour fastness to dry cleaning using perchloroethylene solvent	UNI EN ISO 105-D01
Colour fastness to domestic and commercial laundering	UNI EN ISO 105-C06
Colour fastness to water spotting	UNI EN ISO 15700
Colour fastness to spotting: water	UNI EN ISO 105-E07
Colour fastness to migration into plasticized poly(vinyl chloride)	UNI EN ISO 15701
Assessment of migration of textile colours into polyvinyl	UNI EN ISO 105-X10
Change in colour with accelerated ageing in Climatic Chamber	UNI EN ISO 17228
Assessment of the potential to phenolic yellowing of materials	UNI EN ISO 105-X18
Determination of resistance to surface wetting (spray test)	UNI EN ISO 4920
Colour fastness to Hot pressing	EN ISO 105 X11



**Full Capability List**

# Bureau Veritas Certest CPS Italy

## Capability Overview, Softline Testing

*Providing expert quality assurance services to the Fashion & Luxury worlds*  
*a continuous effort to improve our service*

### SHRINKAGE TEST (partial list)

TEST	METHOD
Dimensional Stability to Washing	ISO 6330
Dimensional change in washing and drying	ISO 5077
Preparation marking and measuring of fabric and garments	ISO 3759
Assessment of performance after cleaning and finishing	ISO 3175-1
Procedure for testing performance when cleaning and finishing using tetrachloroethene	ISO 3175-2
Dimensional change of fabrics induced by free-steam	ISO 3005



### Full Capability List



# Bureau Veritas Certest CPS Italy

## Capability Overview, Softline Testing

*Providing expert quality assurance services to the Fashion & Luxury worlds  
a continuous effort to improve our service*

### PHYSICAL TEST (partial list)

TEST	METHOD
Flex resistance	UNI EN ISO 5402-1, ISO 17694
Abrasion resistance (Martindale)	UNI EN 13520, UNI EN ISO 12945-2
Pilling Box Method	EN ISO 12945-1
Determination of maximum force and elongation at maximum force using the strip method	UNI EN ISO 13934-1
Determination of the slippage resistance of yarns at a seam in woven fabrics	UNI EN ISO 13936-1
Tear Properties of Fabrics (Elmendorf)	UNI EN ISO 13937-1
The Elasticity of Fabric	EN 14704-1
Determination of coating adhesion	UNI EN ISO 2411
Test for adhesion of finish	UNI EN ISO 11644
Determination of stitching resistance of flexible leathers	UNI 10606
Determination of tensile strength and percentage extension	UNI EN ISO 3376
Determination of tear load - Part 1: single edge tear	UNI EN ISO 3377-1
Determination of tear load - Part 2: double edge tear	UNI EN ISO 3377-2



### Full Capability List

# Bureau Veritas Certest CPS Italy

## Capability Overview, Safety Testing

*Providing expert quality assurance services to the Fashion & Luxury worlds  
a continuous effort to improve our service*

### FLAMMABILITY TEST

TEST	METHOD
Flammability of Clothing Textiles	16 CFR 1610

### Full Capability List



# Bureau Veritas Certest CPS Italy

## Capability Overview, Analytical Testing

*Providing expert quality assurance services to the Fashion & Luxury worlds  
a continuous effort to improve our service*

### INORGANIC TEST (partial list)

TEST	METHOD
Determining Total Lead (Pb) in non-metal children's products	CPSC-CH-E1001-08.3: 2012
	CPSC-CH-E1002-08.3: 2012
Determining Lead (Pb) in Paint and Other Similar Surface Coatings	CPSC-CH-E1003-09.1: 2011
Chemical determination of metal content	UNI EN ISO 17072-2: 2011
Chemical determination of metal content Chemical	DIN EN 16711-1: 2014
Determination of cadmium. Wet decomposition method	UNI EN 1122: 2002
Determination of Baneful Elements-Method of Spectrometry-Part 6 Total heavy metal (Pb, Cd, Hg, As)	GB/T 28021: 2011
Determination of some tanning metals on an aqueous eluate (Cr, Al, Ti, Zr)	UNI 10888: 2001
Chemical determination of extractable metal	UNI EN ISO 17072-1: 2011
Chemical determination of extractable metal	DIN EN 16711-2: 2014
Determination of Baneful Elements-Method of Spectrometry-Part 7 Released heavy metal	GB/T 28021: 2011
Migration of certain elements - Determination of heavy metals	UNI EN 71-3: 2014
Determination of pH. Determination of difference figure ( $\Delta pH$ )	UNI EN ISO 4045: 2008
Determination of pH of aqueous extract	GB/T 7573: 2009
Determination of pH of aqueous extract	UNI EN ISO 3071: 2006
Test methods for the assessment of ecological criteria (determination of total metal content)	UNI EN 14602: 2012 par. 4.1



**Full Capability List**

# Bureau Veritas Certest CPS Italy

## Capability Overview, Analytical Testing

*Providing expert quality assurance services to the Fashion & Luxury worlds  
a continuous effort to improve our service*

### ORGANIC TEST

TEST	METHOD
Determination of organotin compounds in footwear materials	UNI CEN ISO TS 16179: 2012
Determination of phthalates in footwear materials	UNI CEN ISO TS 16181: 2011
Determination of the phthalate content. Tetrahydrofuran method	UNI EN ISO 14389: 2014
Determination of Phthalates	CPSC-CH-C1001-09.3: 2010
Determination of ethoxylated alkylphenols. Part 1: Direct method APEO (NPEO, OPEO)	ISO 18218-1: 2015
Determination of ethoxylated alkylphenols. Part 2: Indirect method AP (NP, OP)	ISO 18218-2: 2015
Determination of ethoxylated alkylphenols.	ISO/DIS 18254-1: 2016
Determination of extractable perfluorooctanesulphonate (PFOS) in coated and impregnated solid articles, liquids and fire fighting foams.	UNI CEN TS 15968: 2010
Perfluorinated compounds by LCMSMS	CPSD-AN-00667-MTHD
Determination of fluorotelomer alcohol (FTOH) with GCMS	CPSD-AN-00668-MTHD
Determination of pentachlorophenol content and other chlorinated phenols tetra, tri, di and mono substituted	UNI EN ISO 17070: 2015
Detection and determination of pentachlorophenol in products in consumption	BVL B 82,02-8:2001-06
Detection of disperse dyestuffs	DIN 54231: 2005



### Full Capability List

# Bureau Veritas Certest CPS Italy

## Capability Overview, Chinese Standards

*Providing expert quality assurance services to the Fashion & Luxury worlds  
a continuous effort to improve our service*

### New Center of Excellence for China Market: Testing, Consulting and Solutions

TEST	METHOD	INSTRUMENT
Shoe Flexing	GB/T 3903.1	Shoe Flexing Tester
Shoe Abrasion Resistance	GB/T 3903.2	Shoe Abrasion Resistance Tester
Shoe Peeling strenght	GB/T 3903.3	Shoe Peeling strenght Tester
Shoe Steel Shank Fatigue-Resistance	GB/T 3903.35	Shoe Steel Shank Fatigue-Resistance machine
Insole Backpart Stiffness	GB/T 1813	Insole Backpart Stiffness Tester
Rockwell Hardness	GB/T 230.1	Rockwell Hardness Tester
Bending	GB/T 28011 section 7.8	Bending Tester
Fibreboard flex cracking resistance	QB/T 1472	Fiber Board Flexing Tester
Cold flex resistance for upper material	QB/T 2224	Freezing Tester for Flexing



### Full Capability List



**Q: Why Product sells in China must comply GB standards?**

**A: If you products meet inspection by below authorities and test result is failure, you will get in trouble.**



**CIQ**

China Entry-exit Inspection and Quarantine bureau

Enforcement: At ports

Test Criteria: Mandatory standard

Inspection Rate: 50%~100% by HS code

**Violation disposition: Recall/Destruction /Media exposure**



**QTS**

Bureau of Quality and technical Supervision

Enforcement: At manufacturing stage/ domestic retail market

Test Criteria: Mandatory Standard and product standard

Frequency: Seasonal

**Violation disposition: Stop selling / Destruction/ Media exposure**



**AIC**

Administration of Industry and Commerce

Enforcement: At domestic retail market

Test Criteria: Mandatory standard and product standard

Frequency: Very frequent

**Violation disposition: Stop selling / Penalty based on product Amount(50%~300%)/ Media exposure**



**CCA**

China Consumer Association (Under AIC)

Enforcement: At domestic retail market

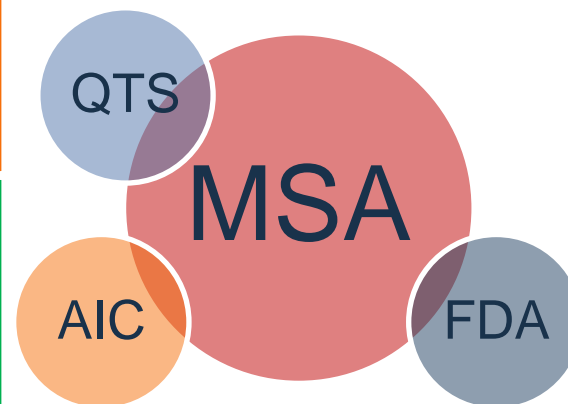
Frequency: Follow consumer complaints and concerns

**Violation disposition: Media exposure**

China Government plan to make quality system more effective and transparent so 3 government department will convert to MSA(Market Supervision Administration) 市场监管局.

•Many city have finished the combination in base organization in 2016.

•FDA: 食药监



## Accreditations

**Laboratory n. 1480**, the up-to-date list of accredited tests is available upon the Accredia official website, inserting the referred lab number, following [this link](#).



*Providing expert quality assurance services to the Fashion & Luxury worlds*

### Accreditations

#### • CPSC US ACCREDITATIONS



Bureau Veritas Certest CPS is **accredited by the CPSC American Commission** (accreditation lab number 1541), to perform **analyses recognized by the American Commissions to import goods in the United States** (e.g. according to the Proposition 65 Regulation).

For further details and updated list of accredited trials please refer to the specific page on the Official CPSC website, through this [link](#).

#### • CHINA ACCREDITATIONS



Bureau Veritas Certest CPS, with Bureau Veritas Chinese Laboratories, is able to release all **Test Reports recognized by the Chinese authorities**, both at customs and national market level, by the release of **CNAS, CMA + CAL reports (2C and/or 3C reports)**.

#### • OTHER LOCAL ACCREDITATIONS

Bureau Veritas Certest CPS is able to assist and provide complete services according to the existing **local different International legislations and warranting various local different accreditations**.



# Bureau Veritas Certest CPS Italy

## Technical Consultation and Training

*Providing expert quality assurance services to the Fashion & Luxury worlds*

Bureau Veritas Certest CPS is able to provide **Technical Consultation** and **Training** activities to assist Brands and Supply Chain. We are also able to provide:

- Performance and Chemical compliance Standards
- Restricted Substance List (**RSL**), Products (**PRSL**) and Manufacturing (**MRSL**).



Standard



Compliance

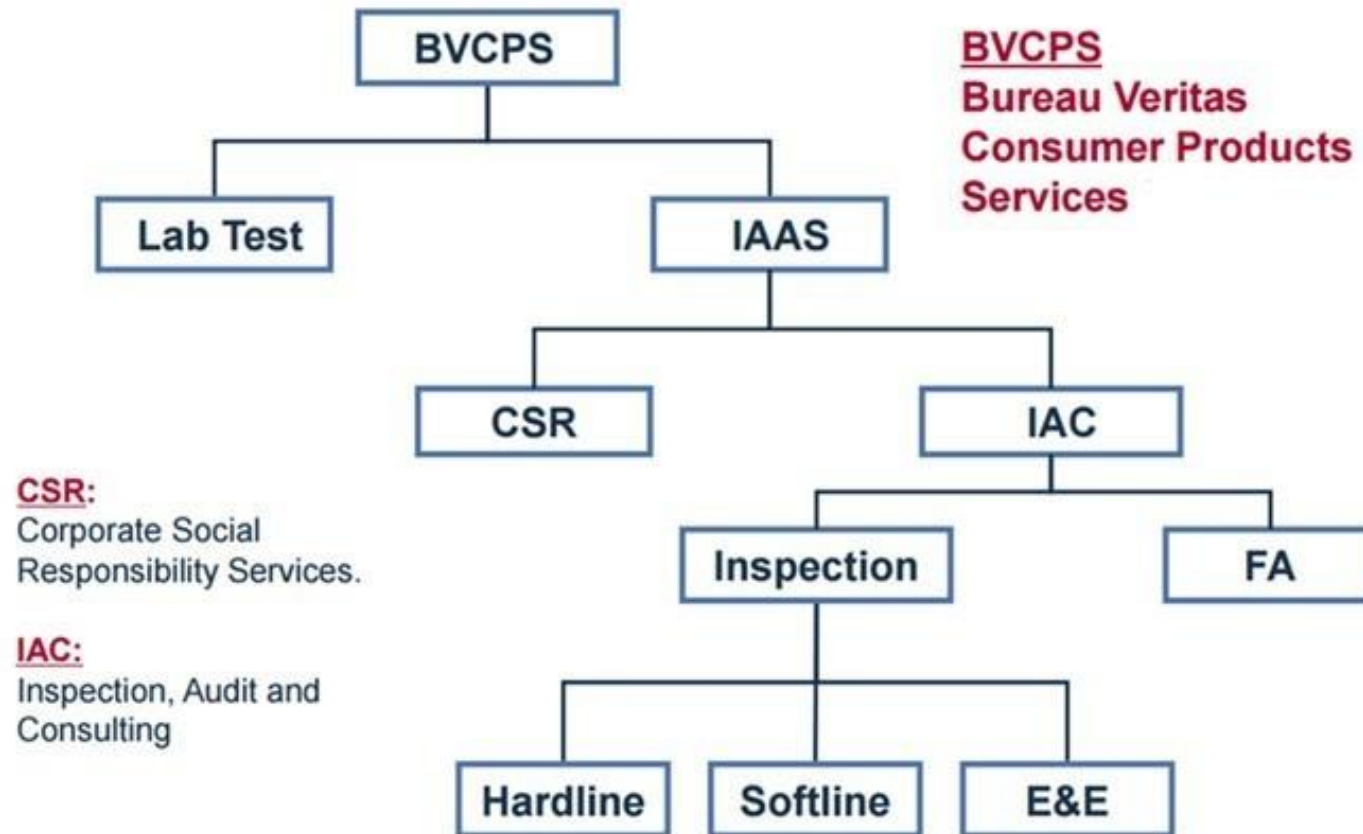


RSL (PRSL, MRSL)



# Bureau Veritas Certest CPS Italy

## Inspections, Audits & Consultancy Services



### Audit Services

1. Factory Assessment
2. Social Accountability Audit
3. Security Assessment (C-TPAT)
4. Manufacturing Assessment Standard

#### Factory Assessment (FA)



##### Interview

Auditor will interview personnel, managers as well as workers, responsible for carrying out the documented procedures or following the work instructions. These will be informal interviews carried out at the work site(s) in the factory.



##### Document Review

Auditor will review procedures, work instructions, and supporting records. This review is conducted at the locations in the factory where the procedures and work instructions are being utilized and the where the records are being generated and retained.



##### Factory Tour / Observation

Auditor will visit all areas of the factory and observe that appropriate equipment, manufacturing processes, defined process controls and procedures are being followed as well as observing general factory conditions.

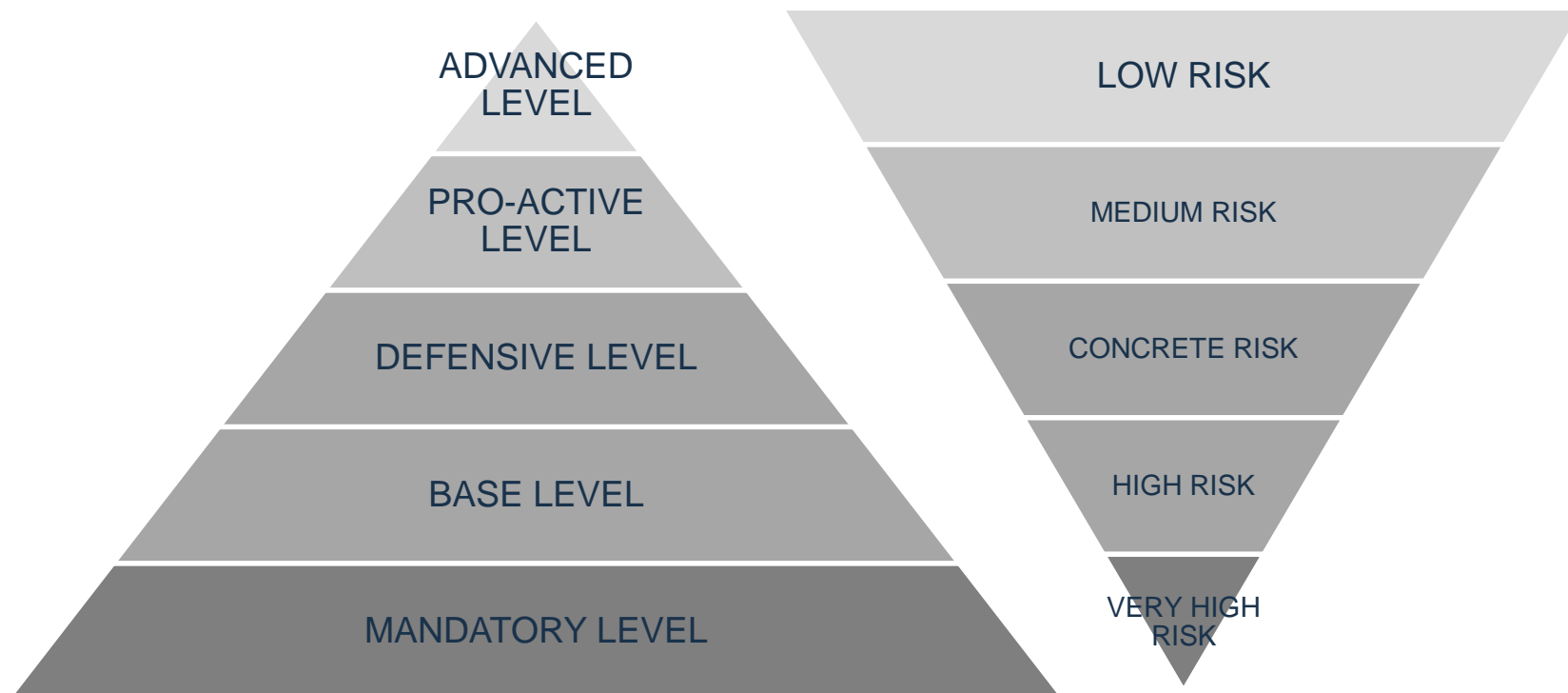
#### Social Accountability Audit (SA)



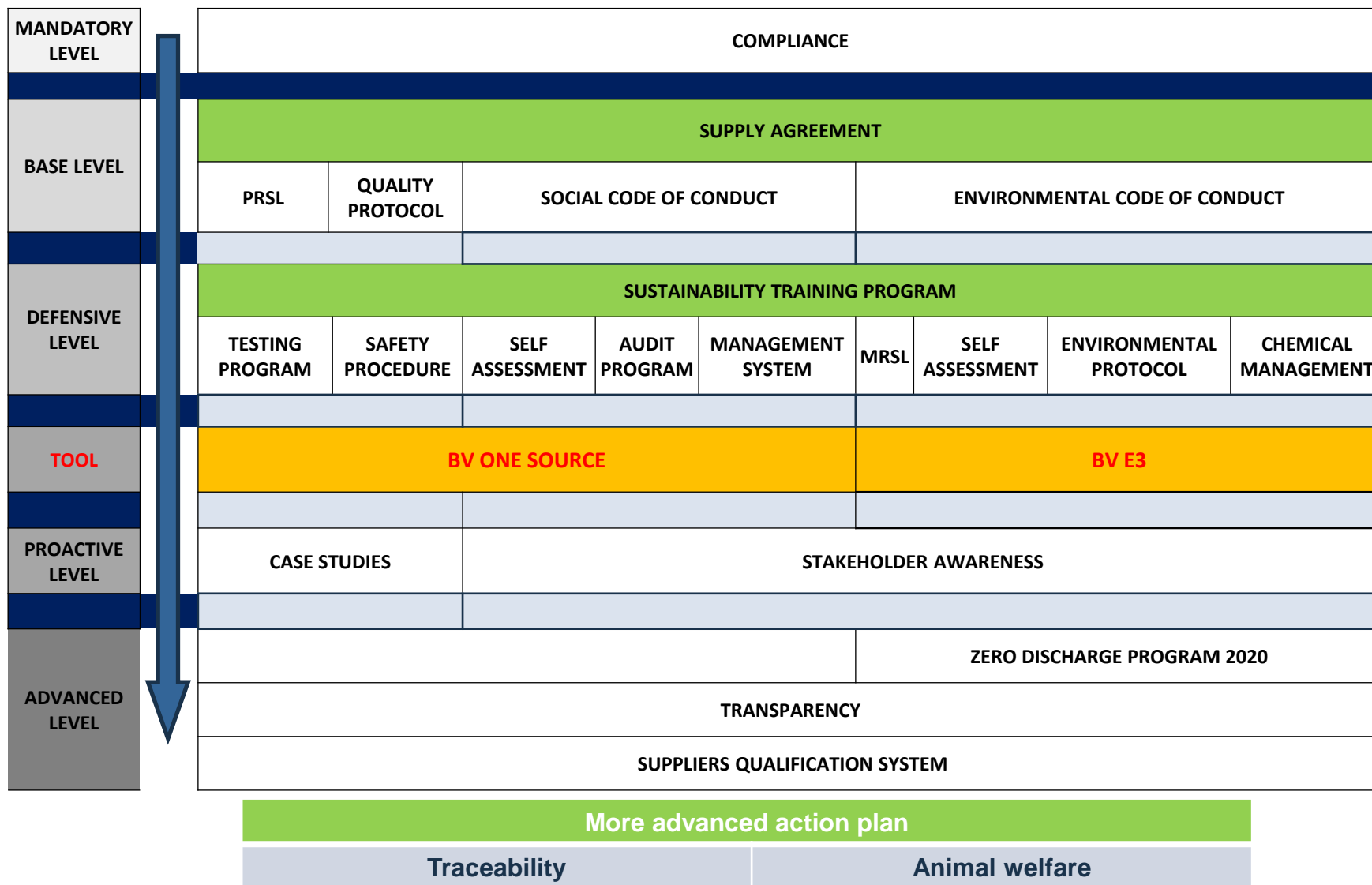
##### Social Audit Attributes

- |   |   |  |   |
|---|---|--|---|
| <input type="checkbox"/> Child Labor                                      | <input type="checkbox"/> Harassment       | <input type="checkbox"/> Hours of Work   | <input type="checkbox"/> Non-Discrimination |
| <input type="checkbox"/> Forced Labor                                     | <input type="checkbox"/> Wages & Benefits | <input type="checkbox"/> Health & Safety | <input type="checkbox"/> Women's Rights     |
| <input type="checkbox"/> Freedom of Association and Collective Bargaining | <input type="checkbox"/> Subcontracting   | <input type="checkbox"/> Environment     |   |





The brands strategies are based on a different level of commitment that could be summarized in the above macro groups. It's clear that to each level corresponds a different grade of risk for the brand protection. It's up to the brand management take the decision





***Move Forward with Confidence***